

**DINOLift**  
Up to the Job



SELF-PROPELLED DINO®

**DINO** XTS Series

- Working height 18.5 m
- Articulated, telescopic boom with jib

# DINO 185XTS

## Standard features in DINO 185XTS:

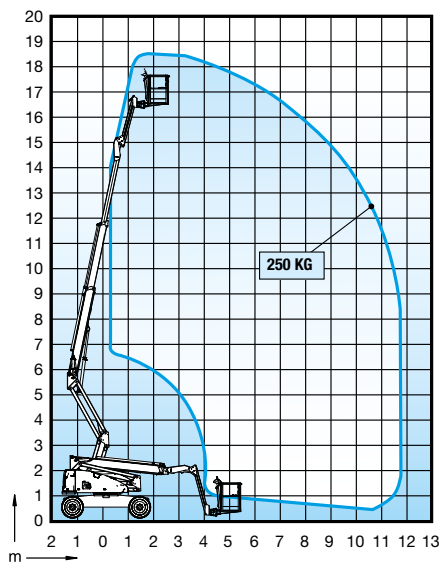
- 250 kg capacity, easy-entry steel basket (picture 1)
- Great outreach; 11.7 m
- Oscillating axle
- 5° inclination allowed
- 45 % gradeability (picture 2)
- 4 wheel drive / 2 wheel steering
- Operator controlled differential lock
- Jib, 1.6 m / ± 75° (picture 3)
- User-friendly; clear and proportional controls, continuous boom rotation, intelligent steering (picture 4)



## Options available for DINO 185XTS:

- Hydraulic generator
- Arctic package (block heater, charger)
- LED working lights

## Technical data



Max. working height	18.50 m
Max. platform height	16.50 m
Max. outreach	11.70 m
Lifting capacity	250 kg
Basket size	0.8 x 1.8 m
Boom rotation	cont.
Basket rotation	180°
Boom control	proport.
Jib	1.6 m/±75°
Transport length	7.17 m
Min. transport length	5.27 m
Transport width	2.29 m
Transport height	2.56 m
Weight	8000 kg
Four wheel drive	std
Steering	2WS
AC socket in the basket x 2	std
Diesel engine	std
Generator 3.5 kW	option
Gradeability	45 %
Drive speed	6.0/1.0 km/h



Technical specifications are subject to change without prior notice.

**DINOLIFT**  
Up to the Job

Dinolift Oy  
Raikkolantie 145 • FI-32210 LOIMAA • FINLAND  
Tel. +358 (0)20 1772 400 • Fax +358 (0)2 76 27 160  
[www.dinolift.com](http://www.dinolift.com)